

Kidde ECS Fire Suppression System Marine Series Component Description



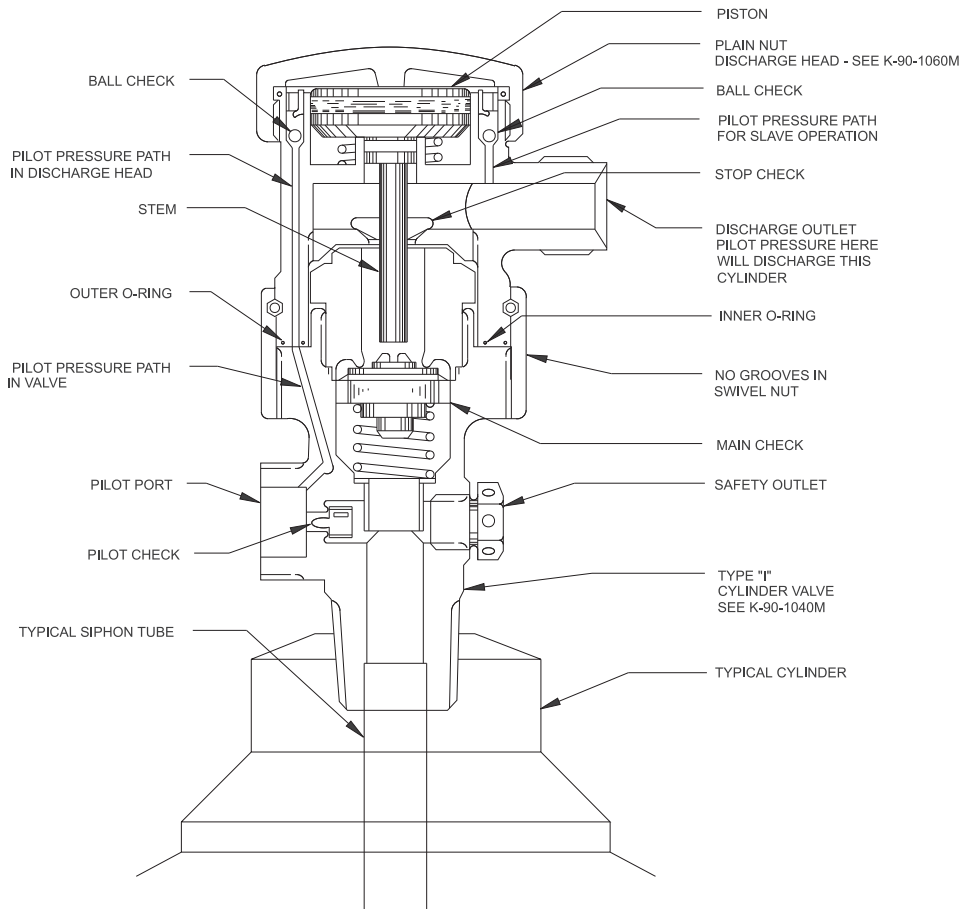
Effective: June 2014

K-90-1061M Rev BA

Assembly of Plain Nut Discharge Head to Type "I" Cylinder Valve

FEATURES

- See Kidde® Manual 06-236225-001 for USCG Approval • RoHS Compliant
- For Use in Marine Applications Only



WARNING Never connect discharge head to cylinder valve without flex loop attached to discharge outlet and connected to system piping and the cylinder is properly secured. Arrangement as shown is for illustration purposes only.

COMPATIBILITY

Series	For Use With
Kidde ECS HFC-227ea	X
Kidde ECS Advanced Delivery FM-200®	X

This literature is provided for informational purposes only. KIDDE-FENWAL, INC. assumes no responsibility for the product's suitability for a particular application. The product must be properly applied to work correctly. If you need more information on this product, or if you have a particular problem or question, contact KIDDE-FENWAL, Inc.

FM-200 is a registered trademark of E.I. du Pont de Nemours and Company. Kidde is a registered trademark of Kidde-Fenwal Inc. All other trademarks are the property of their respective owners.